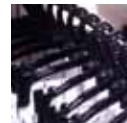


## Why you should think about STI Group first when you think of POS solutions:

- Over 50 years of POS competence
- Professional project management
- Over 100 in-house designers located around the world, all working based on "think global, act local"
- Trans-national steering of campaigns
- One-source engineering and design – from standard module up to individualised concepts
- Shared "think tank" of designers, customers and partners
- Reduction of "time-to-market" through parallel development of product and display as well as online workflow
- Reduction in complexity through usage of global network and local know-how
- Expertise with materials including metal, plastic, wood, acrylic, corrugated cardboard and material combinations
- Special know-how for displays featuring illumination, movement, sound and audio-visual media
- Integration of technical features (multimedia displays)

## Services

- Market research
- Trend scouting and retail analysis
- Engineering and graphic design
- Co-packing and assembling
- Single dispatch or VMI
- Assembly and installation at POS
- Efficiency reviews
- TÜV and CE testing



## Services



# STI GROUP

## PERMANENT DISPLAYS POS SOLUTIONS



## STI GROUP

STI POS Solutions GmbH  
Niederstedter Weg 9  
D-61348 Bad Homburg

Tel.+49 6172 8557-200  
Fax+49 6172 8557-390  
service@sti-group.com

www.sti-group.com

PACKAGING DISPLAY



### 1 Consulting & Briefing

- Assessment of application & demand
- Target price
- Draft concept

### 2 Concept development

- Brainstorming
- Freehand sketches
- Materials definition

### 3 3D realization

- Modeling
- Visualisation
- Animation

### 4 Draft approval

- Provision of print data
- Modification

### 5 Detail design

- Engineering drawings
- Bill of Materials

### 6 Prototyping

- Adjustment for batch production
- QA
- Preparation of serial production

### 7 Serial production

- Setup of production line
- Packaging
- Co-Packing
- Dispatch

### 8 Merchandising

- Build-up & placement
- Refill

